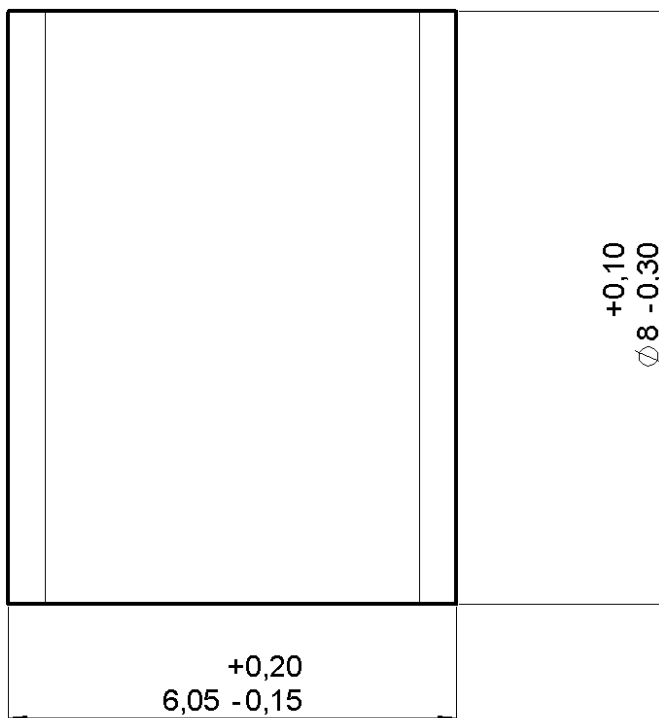


**GAS CAPSULE 230V 10KA**

**R445.999.100**

Series : **GDT**



All dimensions are in mm.



COMPONENTS	MATERIALS	PLATINGS ( $\mu\text{m}$ )
<b>ELECTRODES</b>	<b>METAL</b>	
<b>INSULATOR</b>	<b>CERAMIC</b>	
-		
-		
-		
-		
-	-	-
-	-	-

Issue : 0124 A

In the effort to improve our products, we reserve the right to make changes judged to be necessary.



**GAS CAPSULE**

**R445.999.100**

Series : **GDT**

**PACKAGING**

Standard	Unit	Other
<b>1</b>		<b>Contact us</b>

**ELECTRICAL CHARACTERISTICS**

Nominal DC spark-over voltage : **230 V**

Impulse spark-over voltage at 1 kV/μs : **< 600V**

Nominal impulse discharge current (wave 8/20μs) : **10 kA**

NA NA

NA Nominal alternating discharge current (50Hz, 1s) : **10 A**

NA

Insulation resistance : **10<sup>10</sup> Ohm at 100 V**

Tolerance +/- **20%**

**2.5**

00.000 Capacitance : **< 1.5 pF**

**MECHANICAL CHARACTERISTICS**

Weight **1.500 g**

**ENVIRONMENTAL**

Operating temperature : **-40 / 100 ° C**

Storage temperature : **-40 / 100 ° C**

Relative humidity : **NA**

Climatic category (IEC 68-1) : **40/100/21**

**Issue : 0124 A**

In the effort to improve our products, we reserve the right to make changes judged to be necessary.

